



Laramie County Events

3801 Archer Pkwy

Cheyenne, WY 82009

307-633-4670

LaramieCountyEvents.com

Venue GUIDE



Event
Center
at **ARCHER**



Event
Center
at
ARCHER

LOCATION

Easy Access

- Conveniently located along I-80 and I-25
- Ten minutes from Downtown Cheyenne
- Regional pull from Northern Colorado, Western Nebraska, and the University of Wyoming in Laramie

Directions

From Nebraska

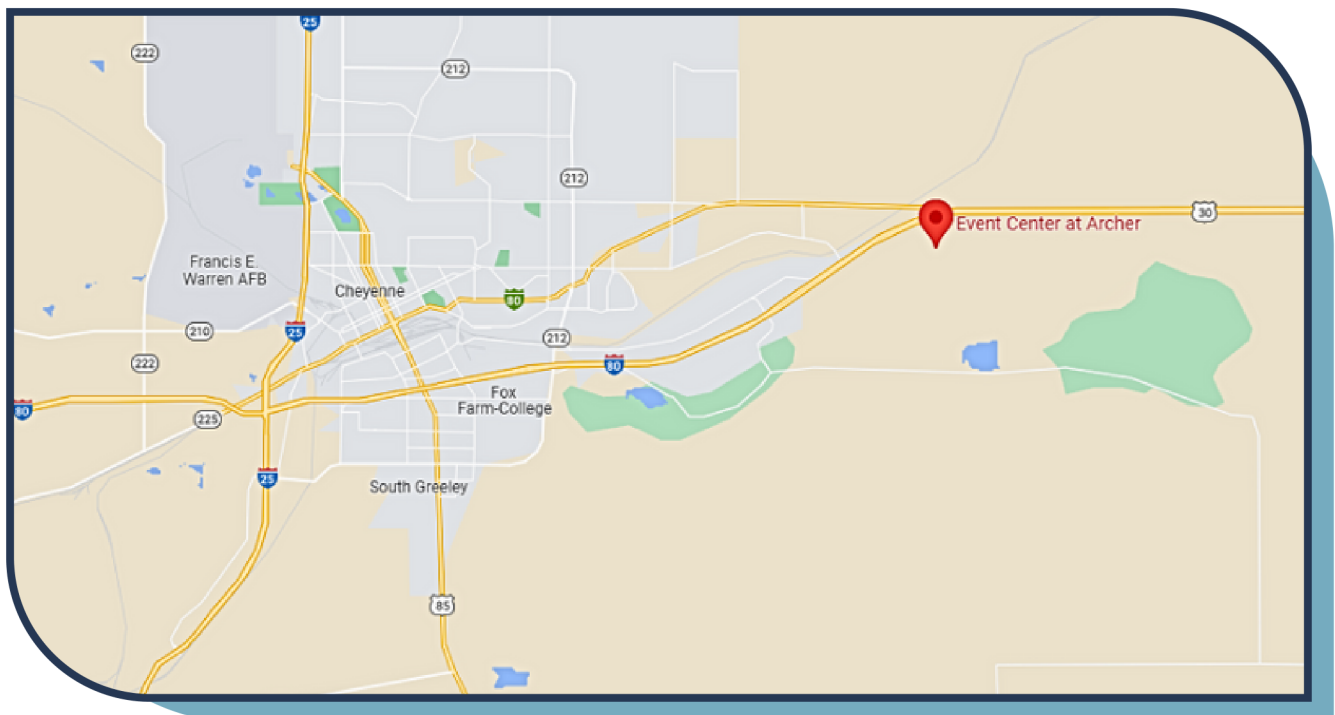
- Take I-80 West
- Exit 370 (Archer)
- Turn Left on Archer Parkway
- Continue Straight thru roundabout
- Event Center at Archer located on the left

From Utah

- Take I-80 East
- Exit 370 (Archer)
- Turn Left on Archer Parkway
- Continue Straight thru roundabout
- Event Center at Archer located on the left

From I-25

- Take I-80 East
- Exit 370 (Archer)
- Turn Right on Archer Parkway
- Continue Straight thru roundabout
- Event Center at Archer located on the left



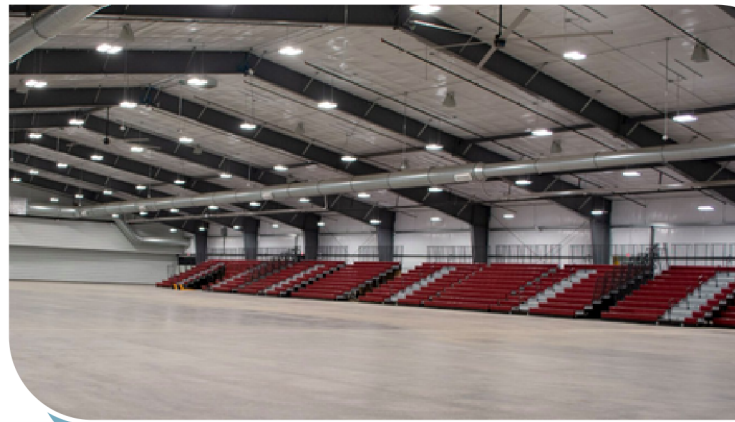
Amenities

- Modular bleachers (1164 capacity)
- Pipe and drape options for cutting the room
- Zoned sound system
- 240V power hookups
- 3-phase/400A show power
- 1000 chairs available
- Free, robust WiFi signal

Events

Ideal For:

- Concerts
- Trade Shows
- Livestock Events
- Banquets
- Conventions
- Weddings



49,731 feet of open space which can be customized to any events needs.



*Located on the east side of the Event Center at Archer.
It features a dirt floor with 14 foot rollup doors.*

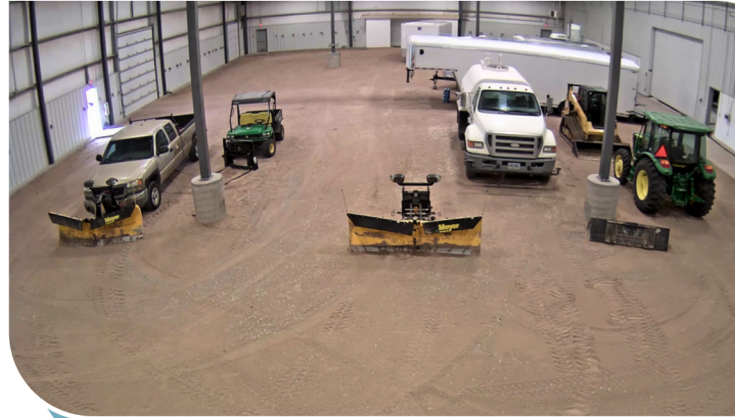
Amenities

- Enclosed and secure
- Dirt floor
- Dedicated Restroom
- Sound system
- Water hookups
- Free WiFi
- Climate controlled
- 14' Roll up door entrances

Events

Ideal For:

- Production Lot
- Catering
- Greenroom
- Meet & Greet
Location





SOUTH BUMPOUT

Located on the south side of the Event Center at Archer. It features a secure area for production needs.

Amenities

- Enclosed and secure
- Dedicated restrooms with showers
- Sound system
- Free WiFi
- Climate controlled
- 10' Roll up door entrances

Events

Ideal For:

- Production Lot
- Catering
- Green Room





Event
Center
at ARCHER

STAFF



Director

Dan Ange

Dange@laramiecounty.com

Team Members

Larry Milbourn

Grounds & Facilities Manager

Nicholle Watkins

Fair Manager

Monica Muñoz

Marketing & Sponsorship Manager

Katherine Rhoades

Event Manager

Elizabeth Pendleton

Administrative Assistant

